

The Elegance of Chessboard Geometry



**60 series helpmates in miniature form
and 10 endgame studies**

Robert Pye

INTRODUCTION

Chess players in general have little interest in formal chess problems, but there is one kind of problem which seems to have a special attraction for many – the *series helpmate*.

In a series helpmate, all but the final move is made by Black. In the course of the solution, Black cannot give check except on his last move (In our compilation we have four problems with this feature). White then plays his one and only move – checkmate!

The challenge is to visualize the final position and then find the sequence of Black moves that lead to it. From White's perspective, the ability to move one's opponent's pieces should make the challenge ridiculously easy, or so it would seem! However, in a good problem in this genre, the solution is often far from obvious and in some cases may not even seem possible. We hope we have provided our readers with a few examples of this.

The problems in this collection are intended to highlight the elegance of chessboard geometry and – by keeping material to a minimum – to focus on the distinctive power and potential of each piece.

Of the 60 problems in this collection, 25 were published elsewhere, as indicated beneath the diagram.

Since the solution is easily forgotten in problems of this nature, it should be possible to pick up this book after an interval of six months, say, and enjoy solving the same problems all over again.

We also include 10 endgame studies in the usual game format. These too are intended to express the remarkable aesthetic properties of chessboard geometry.

Robert Pye
Greystones
Ireland
17 March, 2023

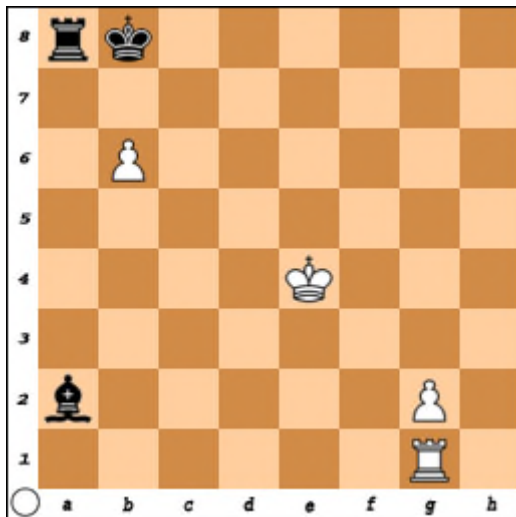
DEDICATION

This book is dedicated to the small group of individuals who are working to expose the totalitarian threat of the 'New World Order'. In a speech addressed to a joint session of the U.S. Congress on 11 September, 1990, President G H Bush revealed that a high-level political decision had been taken to press ahead with this plan.

The existing world order is based on the wisdom celebrated in the *Book of Proverbs*. We have included a number of these proverbs as a gentle reminder that our civilization is built on principles that have survived the test of time. Any attempt to replace them, or annul their validity, will result in chaos.

1

Series Helpmate in 5



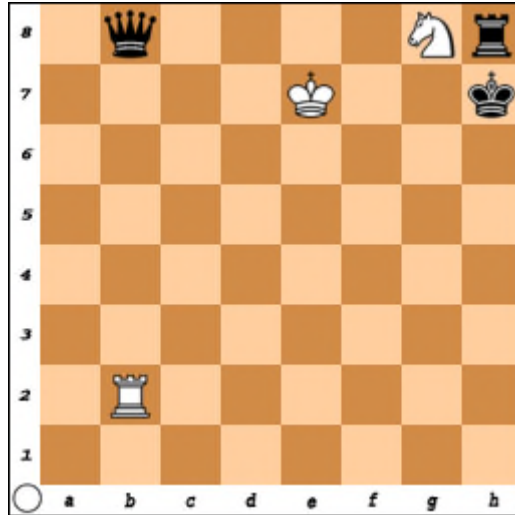
“Withhold not good from them to whom it is due,
when it is in the power of thine hand to do it.”
– Proverbs 27:3

Solution:

1. Bg8
2. Ra2
3. Rxg2
4. Rg7
5. Rb7**Rxg8#**

2

Series Helpmate in 5



Irish Chess Union 2018

“For wisdom is better than rubies; and all the things
that may be desired are not to be compared to it.”

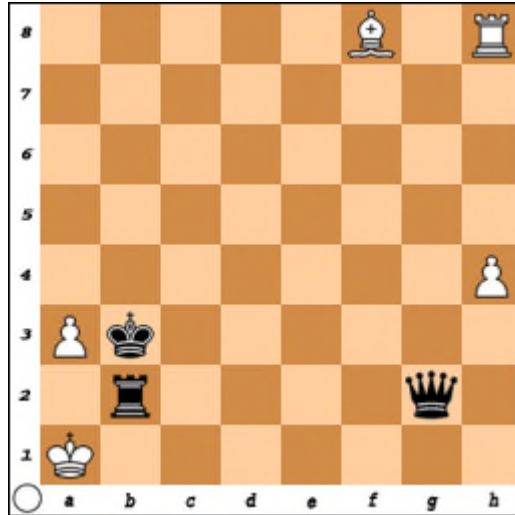
– Proverbs 8:11

Solution:

1. Kg7
2. Rh1
3. Qh2
4. Qh8
5. Rh7**Rg2#**

3

Series Helpmate in 6



StrateGems 2019

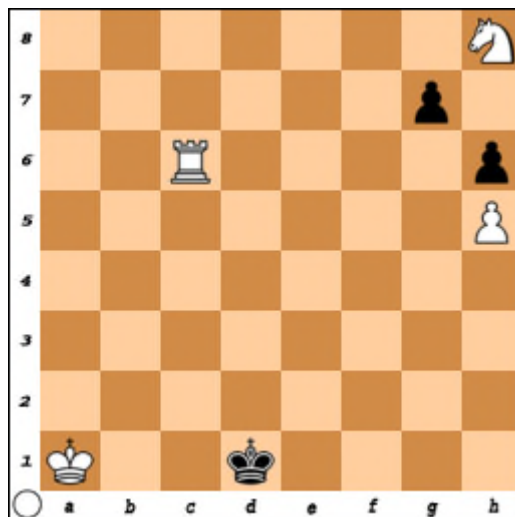
“He that getteth wisdom loveth his own soul:
he that keepeth understanding shall find good.”
– Proverbs 19:8

Solution:

1. Qb7
2. Rh2
3. Rxh4
4. Ra4
5. Qb4
6. Kxa3**Rh3#**

4

Series Helpmate in 16



The British Chess Magazine 2019

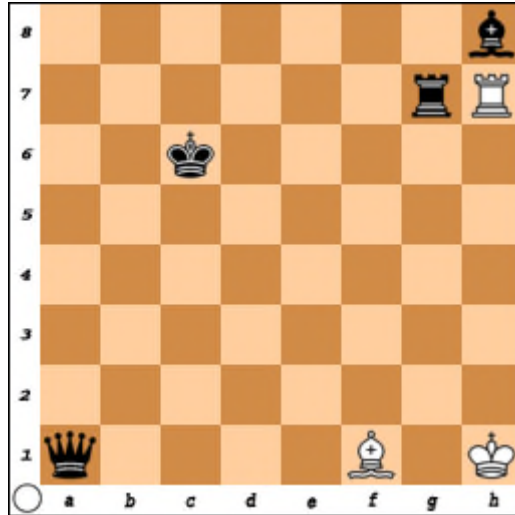
“The memory of the just is blessed:
but the name of the wicked shall rot.”
– Proverbs 10:7

Solution:

- 1-3. Kd1-g4
4. Kxh5
5. Kg5
- 6-9. h6-h2
10. h1=B
11. Be4
12. Bg6
- 13-15. Kg5-g8
16. Bh7**Rc8#**

5

Series Helpmate in 6



Irish Chess Union 2018

“He that walketh with wise men shall be wise:
but a companion of fools shall be destroyed.”

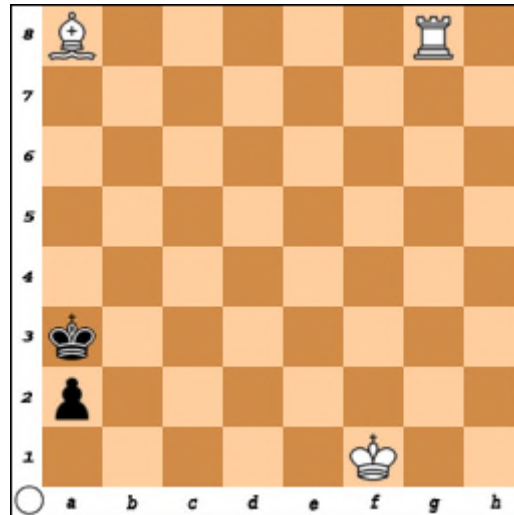
– Proverbs 13:20

Solution:

1. Kb7
2. Ka8
3. Rg2
4. Be5
5. Bb8
6. Qh8**Bxg2#**

6

Series Helpmate in 11



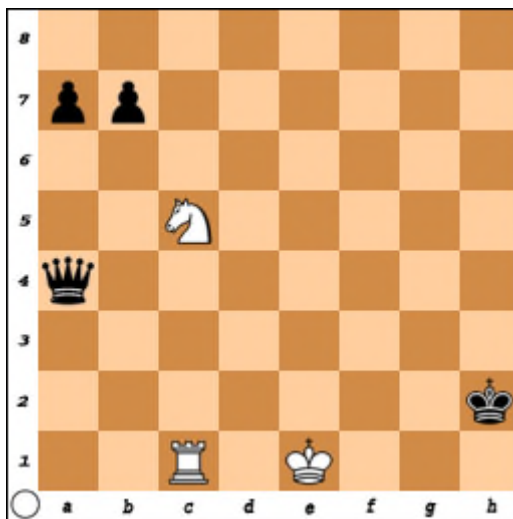
“A fool despiseth his father's instruction:
but he that regardeth reproof is prudent.”
– Proverbs 15:5

Solution:

1. Kb2
2. Kc1
3. a1=Q
4. Qg7
5. Kd2
6. Ke3
7. Kf4
8. Kg3
9. Kh2
10. Qb7
11. Kh1**Rh8#**

7

Series Helpmate in 8



Irish Chess Union 2018

“Better is little with the fear of the LORD than
great treasure and trouble therewith.”

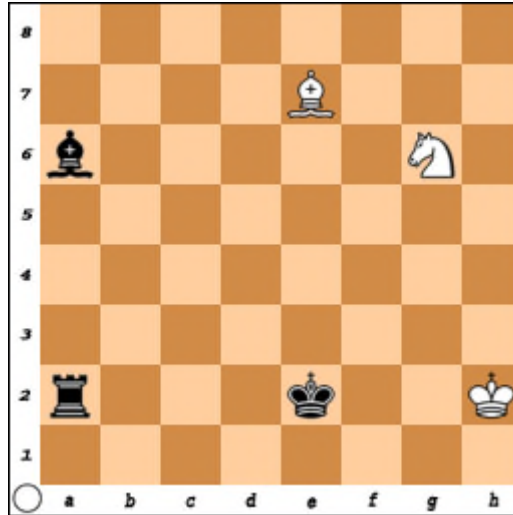
– Proverbs 15:16

Solution:

- 1-3. Kh2-e5
- 4-5. Qa5-a8
- 6-8. Ke5-b8Nd7#

8

Series Helpmate in 8



The Problemist Supplement 2018

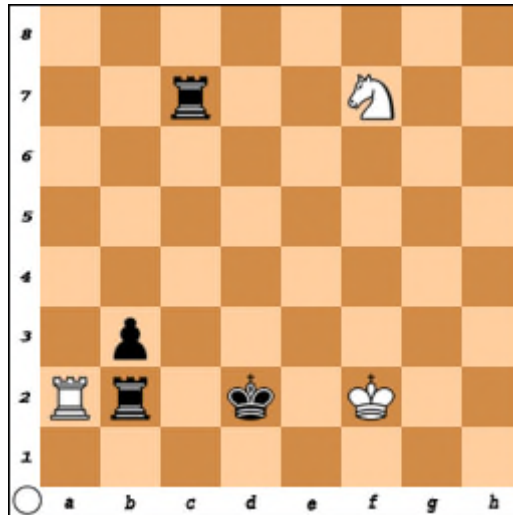
“Whoso rewardeth evil for good,
evil shall not depart from his house.”
– Proverbs 17:13

Solution:

1. Bc8
2. Ra8
- 3-5. Ke2-h5
6. Bg4
7. Rh8
8. Rh6Nf4#

9

Series Helpmate in 8



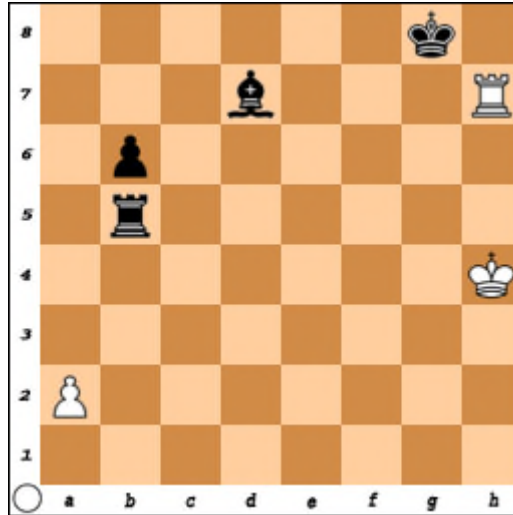
“The words of a talebearer are as wounds, and they go down into the innermost parts of the belly.”
– Proverbs 18:8

Solution:

1. R7c2
2. Rb1
3. b2
4. Rc5
- 5-7. Kd2-f4
8. Rf5**Ra4#**

10

Series Helpmate in 10



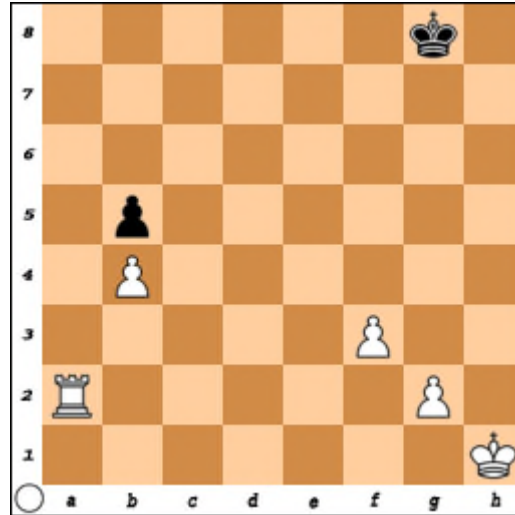
“I love them that love me; and those that seek me early shall find me.”
– Proverbs 8:17

Solution:

- 1-5. Kg8-c6
6. Bg4
7. Rb4
8. Kb5
9. Ka4
10. b5**Ra7#**

11

Series Helpmate in 18



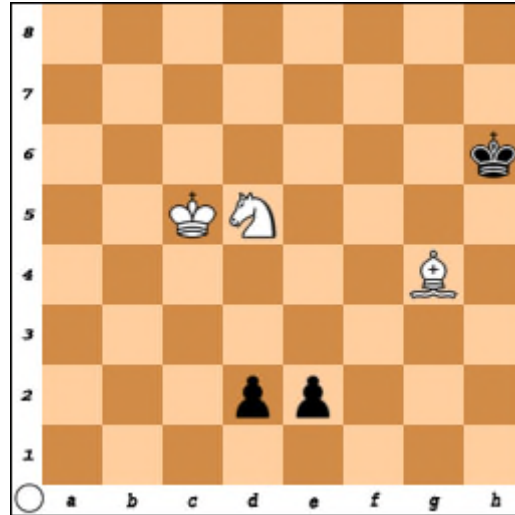
“Whoso stoppeth his ears at the cry of the poor,
he also shall cry himself, but shall not be heard.”
– Proverbs 21:13

Solution:

- 1-4. Kg8-c4
5. Kxb4
6. Kc3
- 7-9. b5-b2
- 10-11. Kc3-e1
12. b1=R
13. Rb2
- 14-15. Ke1-g3
16. Rxc2
17. Kh3
18. Rg3**Rh2#**

12

Series Helpmate in 8



Irish Chess Union 2018

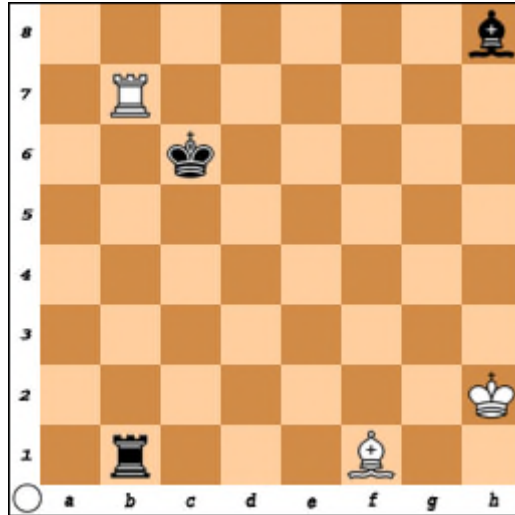
“A prudent man foreseeth the evil, and hideth himself:
but the simple pass on, and are punished.”
– Proverbs 22:3

Solution:

1. Kg5
2. Kh4
3. Kg3
4. Kf2
5. Ke1
6. Kd1
7. Kc2
8. Kd3**Bf5#**

13

Series Helpmate in 8



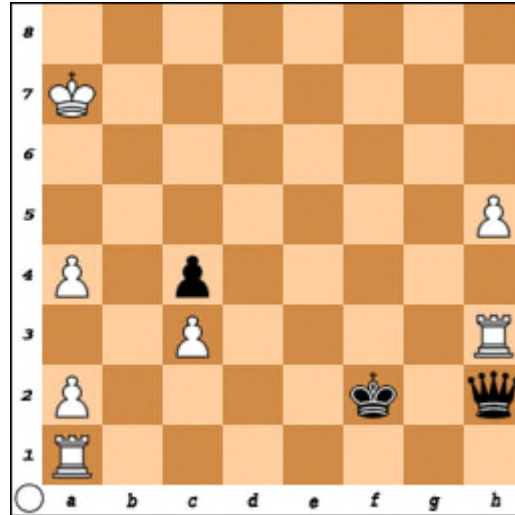
“Train up a child in the way he should go:
and when he is old, he will not depart from it.”
– Proverbs 22:6

Solution:

1. Rb4
2. Rf4
3. Be5
4. Bc7
5. Kd7
6. Ke8
7. Bd8
8. Rf8**Bb5#**

14

Series Helpmate in 11



StrateGems 2019

“It is the glory of God to conceal a thing;
but the honour of kings is to search out a matter.”

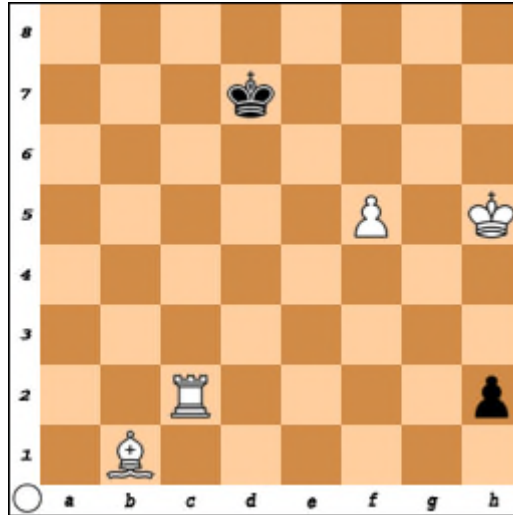
– Proverbs 25:2

Solution:

1. Qe5
2. Qxh5
3. Qe2
4. Qxa2
- 5-8. Kf2-b3
9. Kxa4
10. Ka5
11. Qa4**Rh5#**

15

Series Helpmate in 14



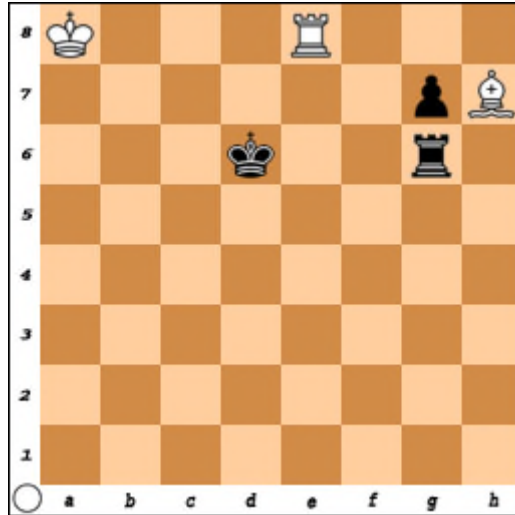
“The sluggard is wiser in his own conceit than seven men that can render a reason.”
– Proverbs 26:16

Solution:

- 1-5. Kd7-h3
6. h1=Q
7. Qa8
8. Kg3
9. Kf4
10. Kxf5
11. Kf6
12. Kg7
13. Kh7
14. Qh8**Rg2#**

16

Series Helpmate in 12



StrateGems 2019

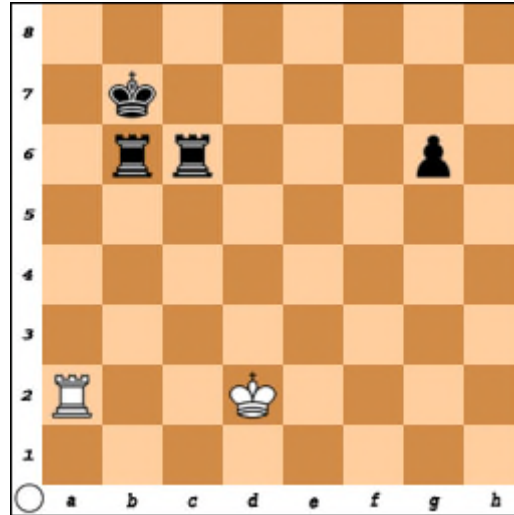
“He that trusteth in his own heart is a fool:
but whoso walketh wisely, he shall be delivered.”
– Proverbs 28:26

Solution:

1. Kc7
2. Rd6
- 3-6. g7-g2
7. g1=B
8. Ba7
9. Bb8
10. Rd8
11. Kc8
12. Bc7**Bf5#**

17

Series Helpmate in 13



StrateGems 2016

“Every word of God is pure: he is a shield
unto them that put their trust in him.”

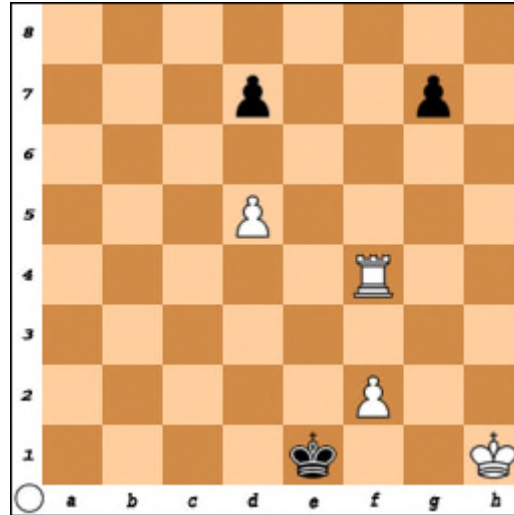
– Proverbs 30:5

Solution:

- 1-4. g6-g2
5. g1=N
6. Ne2
7. Nc3
8. Na4
9. Ka8
10. Rb8
11. Ra6
12. Nc5
13. Nb7**Rxa6#**

18

Series Helpmate in 22



StrateGems 2016

“Open thy mouth for the dumb in the cause of
all such as are appointed to destruction.”

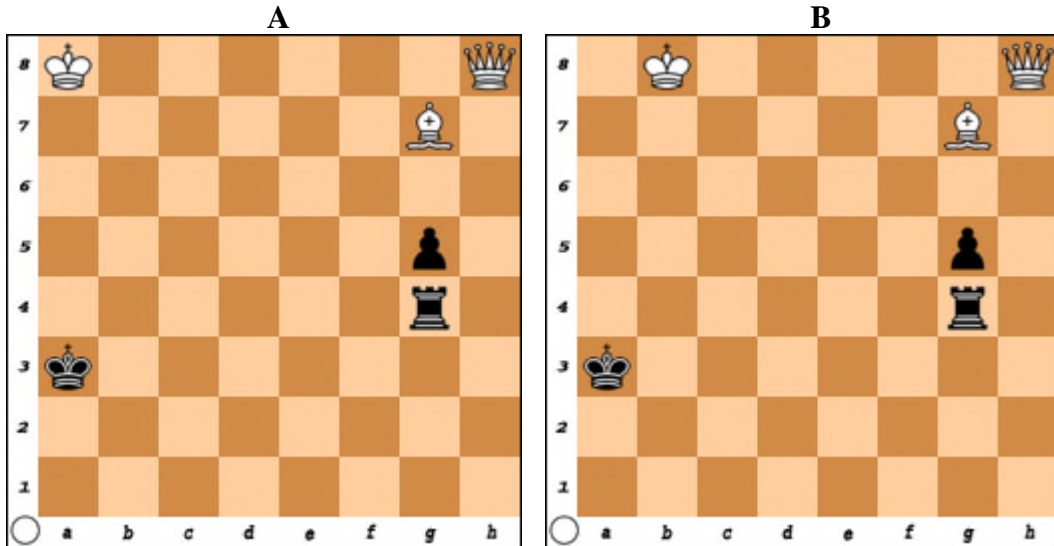
– Proverbs 31:8

Solution:

- 1-3. g7-g3
4. gxf
5. f1=N
6. Ne3
7. Nxd5
8. Nf6
- 9-12. d7-d2
13. d1=R
- 14-15. Rd1-f3
- 16-18. Ke1-h3
- 19-21. Rh4
22. Ng4**Rf3#**

19

Series Helpmate in 8



The British Chess Magazine 2019

“It is better to dwell in the wilderness,
than with a contentious and an angry woman.”

– Proverbs 21:19

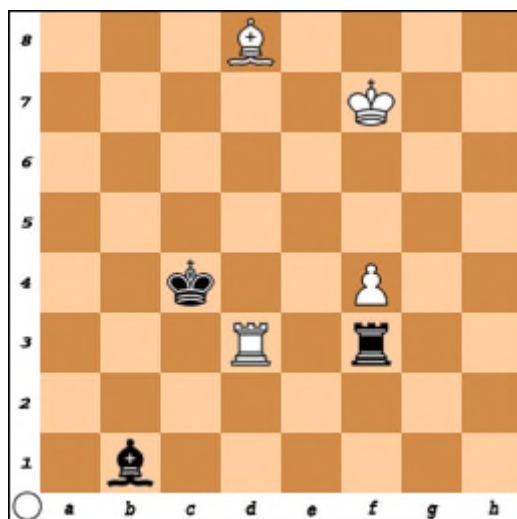
Solutions:

- A**
1. Rb4
 - 2-5. g4-g1=R
 6. Rxg7
 7. Rg3
 8. R3b3**Qa1#**

- B**
1. Ra4
 - 2-5. g4-g1=R
 6. Rxg7
 7. Rg2
 8. Ra2**Qc3#**

20

Series Helpmate in 9 - 3 solutions -



Irish Chess Union 2018

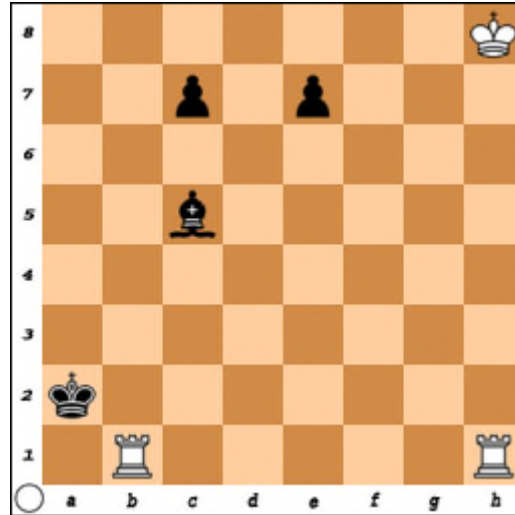
“The man that wandereth out of the way of understanding
shall remain in the congregation of the dead.”

– Proverbs 21:16

Solution A:	Solution B:	Solution C:
1. Bc2	1. Re3	1. Kxd3
2. Ba4	2. Re4	2. Ke4
3. Bd7	3. Rd4	3. Kf5
4. Bf5	4. Kd5	4. Kg4
5. Rxf4	5. Ke4	5. Kh5
6. Rd4	6. Kf5	6. Kh6
7. Kd5	7. Kg4	7. Kh7
8. Ke5	8. Kh5	8. Kh8
9. Re4 Bc7#	9. Kh6 Rh3#	9. Bh7 Bf6#

21

Series Helpmate in 14



Tehtävänäiekka 2019

“The fear of the LORD is the beginning of knowledge:
but fools despise wisdom and instruction.”

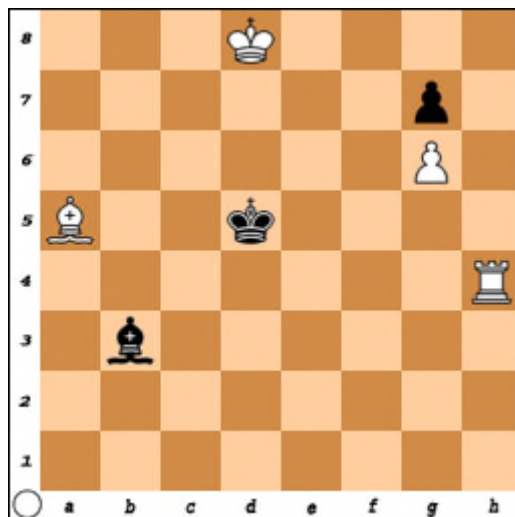
– Proverbs 1:7

Solution:

1. Ba3
- 2-5. c7-c2
6. cxb1 = R
- 7-12. Ka2-f8
13. Rb8
14. Re8**Rf1#**

22

Series Helpmate in 11



Tehtävänäiekka 2019

“How long, ye simple ones, will ye love simplicity?
and the scorners delight in their scorning,
and fools hate knowledge?”

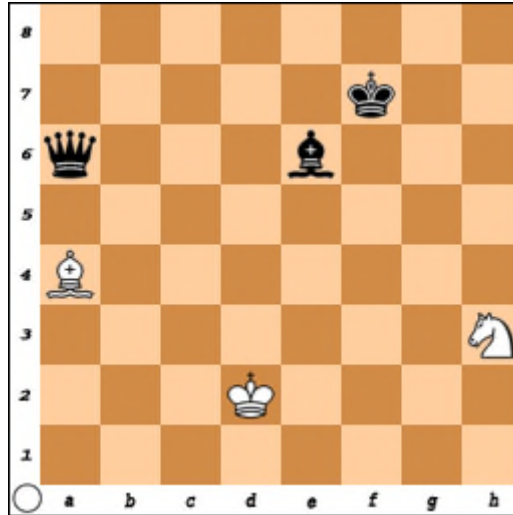
– Proverbs 1:22

Solution:

1. Bc2
2. Bxg6
3. Bh5
- 4-5. g7-g4
- 6-7. Kd5-f3
- 8-9. g4-g2
10. Kg3
11. Bf3**Be1#**

23

Series Helpmate in 7



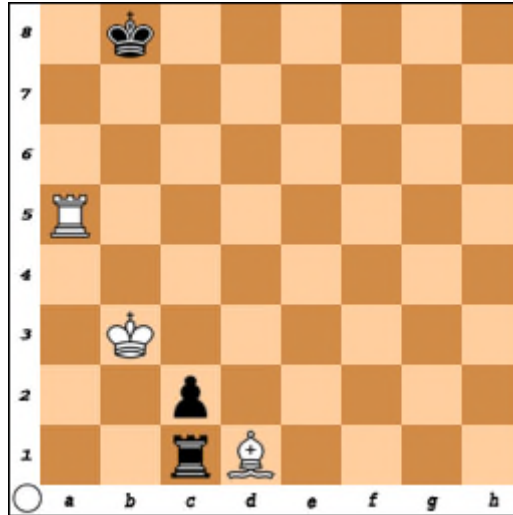
“Keep thy heart with all diligence;
for out of it are the issues of life.”
– Proverbs 4:23

Solution:

1. Bg4
2. Ke6
3. Kd5
4. Qd6
5. Qg3
6. Ke4
7. Kf3**Bc6#**

24

Series Helpmate in 8



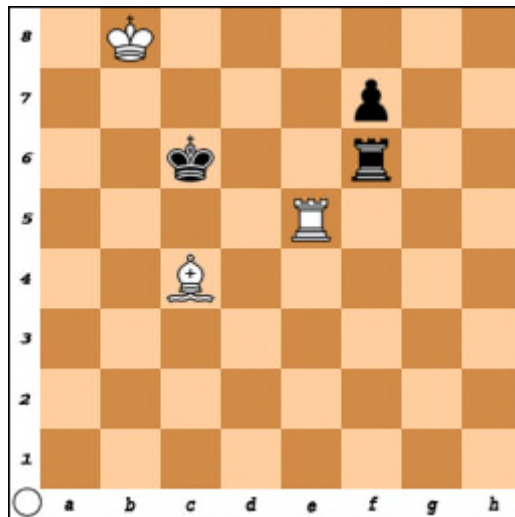
“Keep my commandments, and live;
and my law as the apple of thine eye.”
– Proverbs 7:2

Solution:

1. Ra1
2. c1=B
3. Bf4
4. Rc1
5. Rc7
6. Ra7
7. Ka8
8. Bb8**Bf3#**

25

Series Helpmate in 9 - 2 solutions -



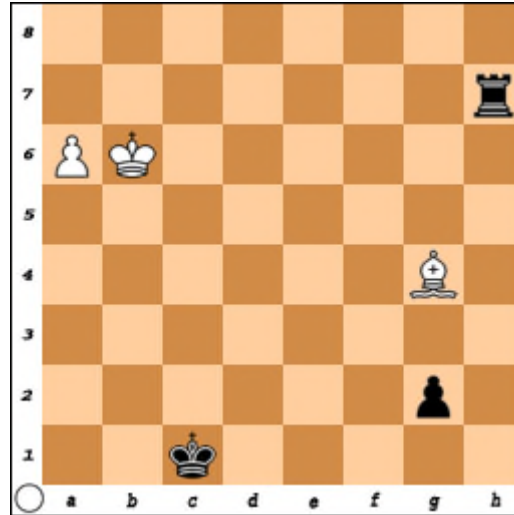
Irish Chess Union 2018

“...he that sinneth against me wrongeth his own soul:
all they that hate me love death.”
– Proverbs 8:36

Solution A:	Solution B:
1. Kb6	1. Rd6
2. Rc6	2-5. f7-f2
3-6. f7-f2	6. f1 = N
7. f1 = R	7. Ne3
8. Ra1	8. Nd5
9. Ra6 Rb5#	9. Nb6 Bb5#

26

Series Helpmate in 14

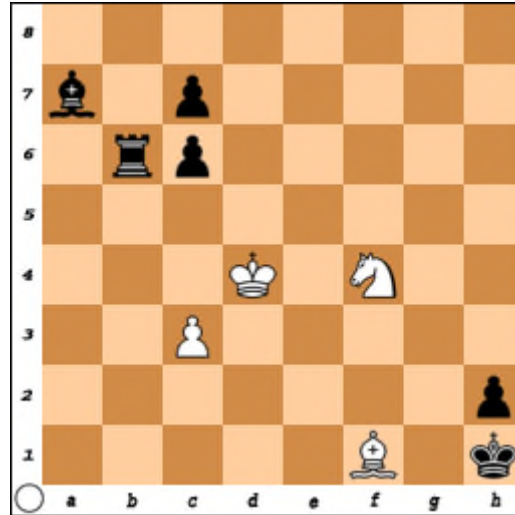


“The lips of the righteous feed many:
but fools die for want of wisdom.”
– Proverbs 10:21

Solution:

1. Kd2
2. Ke3
3. g1=B
4. Bh2
5. Kf4
6. Kxg4
- 7-12. Kg4-a8
13. Bb8
14. Rb7+axb7#

Series Helpmate in 11



The Problemist 2019

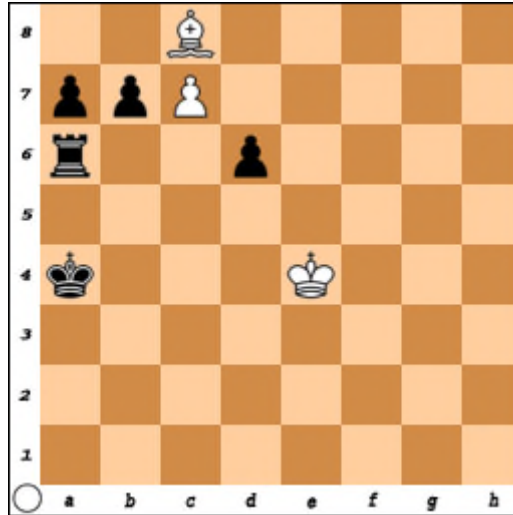
“Riches profit not in the day of wrath:
but righteousness delivereth from death.”
– Proverbs 11:4

Solution:

1. Bb8
2. Rb5
3. Rc5
4. Ba7
5. Bb6
6. Ba5
7. Rxc3
8. Re3
9. Be1
10. Bf2
11. Bg1**Bg2#**

28

Series Helpmate in 8



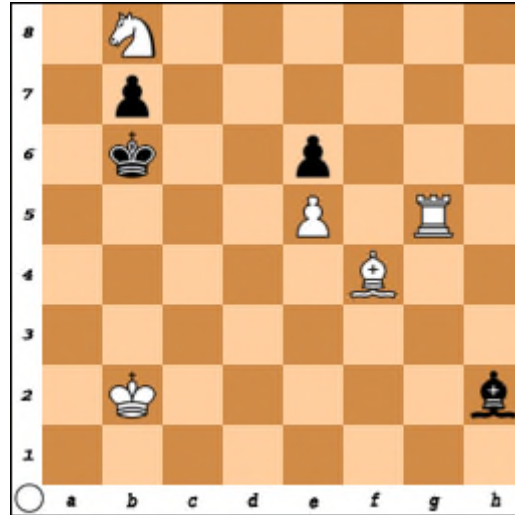
“Hope deferred maketh the heart sick:
but when the desire cometh, it is a tree of life.”
– Proverbs 13:12

Solution:

1. Kb5
2. Kc6
3. b5
4. Rb6
5. Rb8
6. Rxc8
7. Rb8
8. Rb6c8=Q#

29

Series Helpmate in 11



Tehtävänäiekka 2019

“There is a way which seemeth right unto a man,
but the end thereof are the ways of death.”

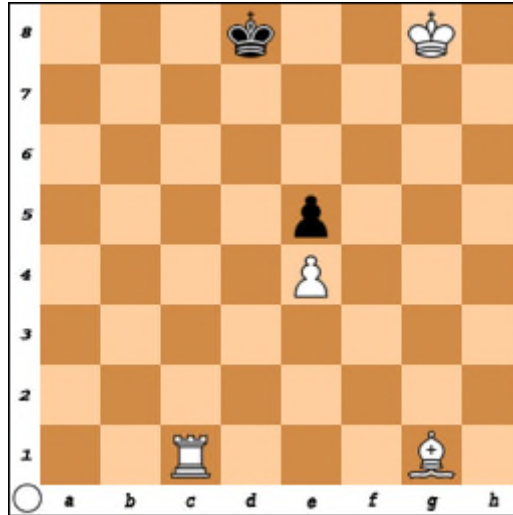
– Proverbs 14:12

Solution:

1. Bg1
2. Bc5
3. Bd6
4. Kc5
5. Kd4
6. Bxe5
7. Bc7
8. e5
9. Kc5
10. Kb6
11. e4**Be3#**

30

Series Helpmate in 16



“Go from the presence of a foolish man, when thou perceivest not in him the lips of knowledge.”

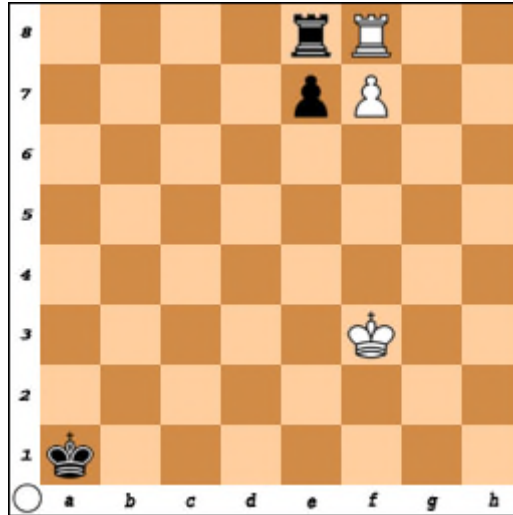
– Proverbs 14:7

Solution:

- 1-4. Kd8-f4
5. Kxe4
6. Kd5
- 7-9. e5-e2
10. e1=N
11. Nd3
12. Nc5
- 13-15. Kd5-a8
16. Nb7**Rc8#**

31

Series Helpmate in 9



Tehtävänäiekka 2019

“A wise man feareth, and departeth from evil:
but the fool rageth, and is confident.”

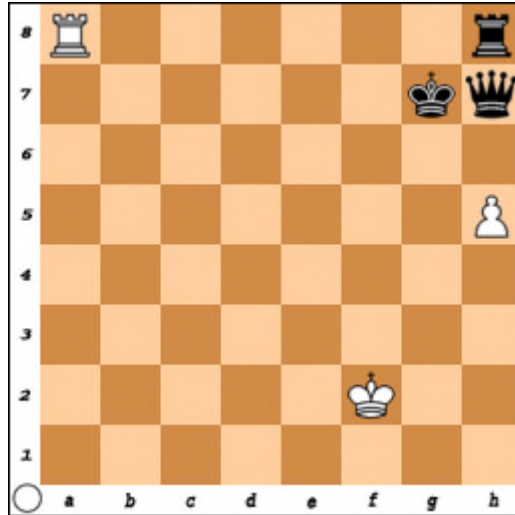
– Proverbs 14:16

Solution:

- 1-5. Ka1-f5
6. e5
7. Re6
8. Rg6
9. Rg8fxg=Q#

32

Series Helpmate in 6



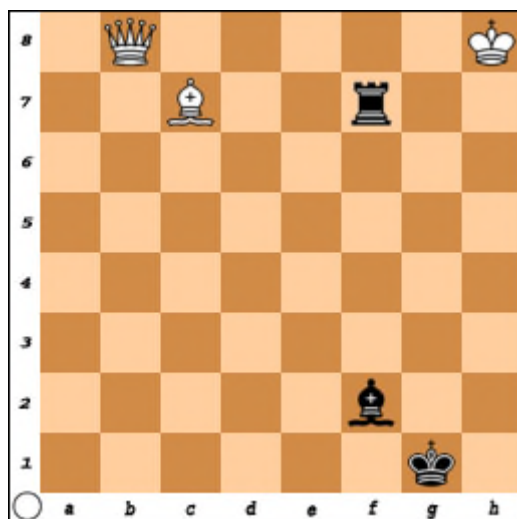
“The simple believeth every word: but the prudent man
looketh well to his going.”
– Proverbs 14:15

Solution:

1. Kh6
2. Kxh5
3. Kg4
4. Qh1
5. Kh3
6. Kh2**Rxh8#**

33

Series Helpmate in 4



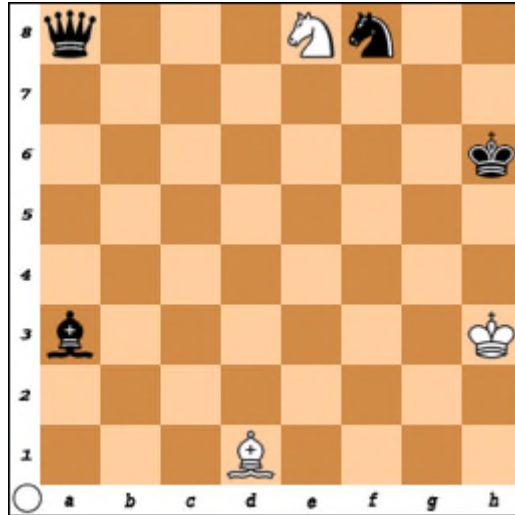
“The eyes of the LORD are in every place,
beholding the evil and the good.”
– Proverbs 15:3

Solution:

1. Kh1
2. Bg1
3. Rf1
4. Ra1Qb7#

34

Series Helpmate in 6



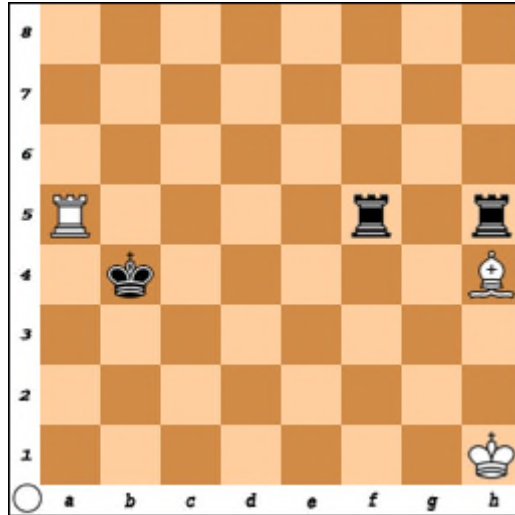
“...he that is of a merry heart hath a continual feast.”
– Proverbs 15:15

Solution:

1. Kh7
2. Kg8
3. Nh7
4. Bf8
5. Qa1
6. Qh8**Bb3#**

35

Series Helpmate in 8



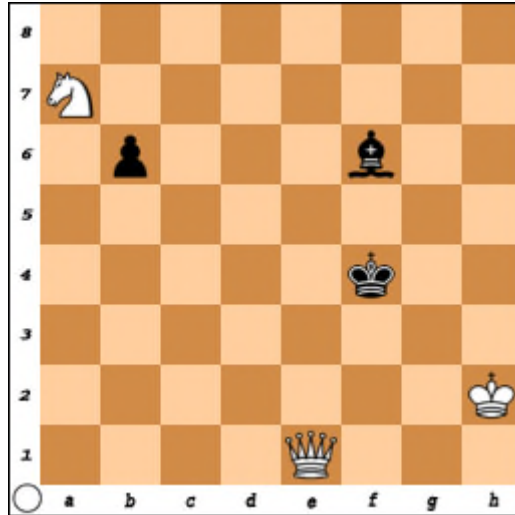
“Pride goeth before destruction,
and a haughty spirit before a fall.”
– Proverbs 16:18

Solution:

1. Rf7
2. Rb5
3. Kc5
4. Kd6
5. Rg5
6. Ke7
7. Kf8
8. R5g7**Ra8#**

36

Series Helpmate in 9



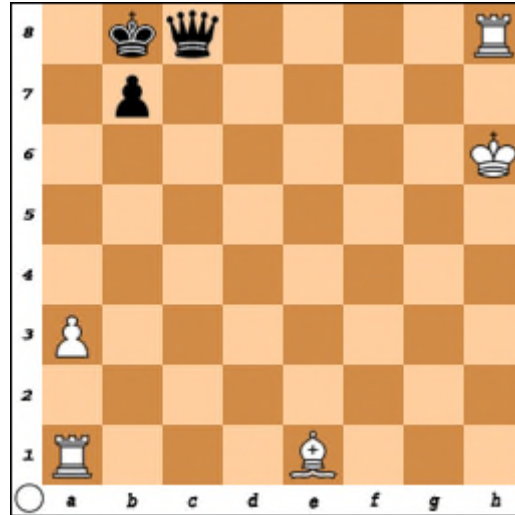
“Whoso mocketh the poor reproacheth his Maker:
and he that is glad at calamities shall not be unpunished.”
– Proverbs 17:5

Solution:

1. Bd4
2. Be3
3. Ke5
4. Kd6
5. Bg5
6. Bd8
7. Bc7
8. Bb8
9. Kc7**Qe7#**

37

Series Helpmate in 6



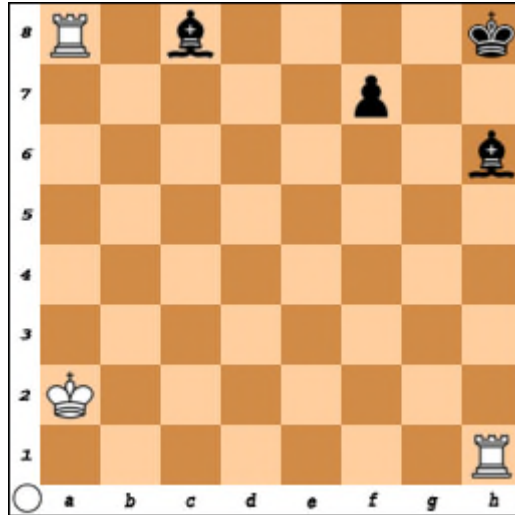
“A reproof entereth more into a wise man
than an hundred stripes into a fool.”
– Proverbs 17:10

Solution:

1. Kc7
2. Qa8
3. Qxa3
4. Qa8
5. Qc8
6. Kb8**Bg3#**

38

Series Helpmate in 11



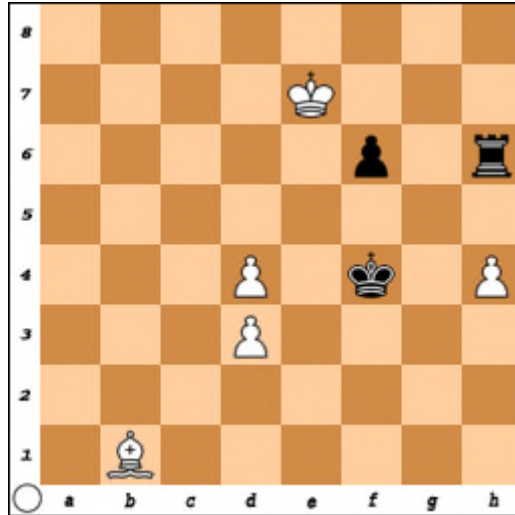
“A fool hath no delight in understanding,
but that his heart may discover itself.”
– Proverbs 18:2

Solution:

- 1-4. f5-f2
5. f1=N
6. Ng3
7. Nh5
8. Bf8
9. Bf5
10. Bh7
11. Ng7**Rxf8#**

39

Series Helpmate in 7



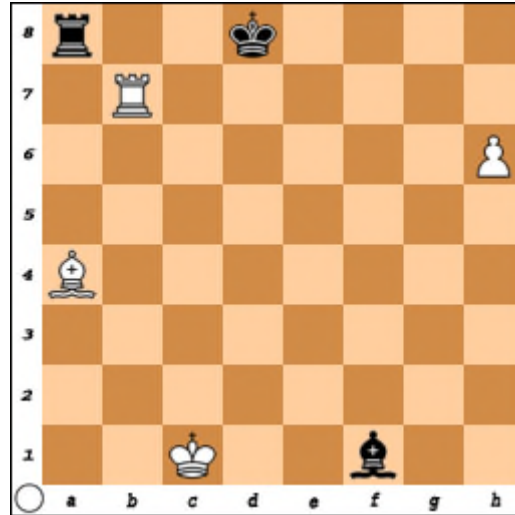
“Even a child is known by his doings,
whether his work be pure, and whether it be right.”
– Proverbs 20:11

Solution:

1. f5
2. Rd6
3. Rxd4
4. Ke5
5. Rg4
6. f4
7. Kf5**d4#**

40

Series Helpmate in 7



Tehtäväniikka 2019

“The hearing ear, and the seeing eye,
the LORD hath made even both of them.”

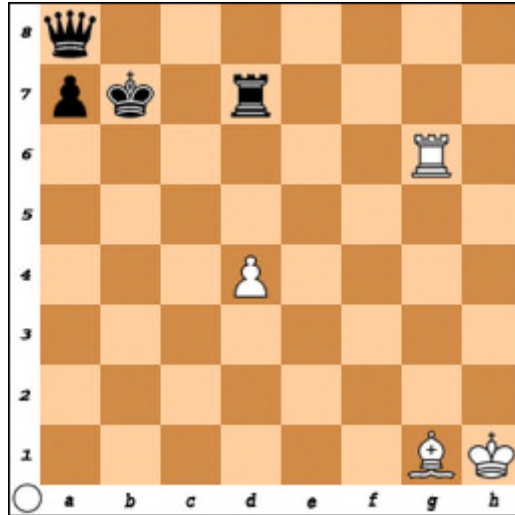
– Proverbs 20:12

Solution:

1. Bc4
2. Rc8
3. Rc7
4. Ke7
5. Kf8
6. Rg7
7. Bg8hxg#

41

Series Helpmate in 6



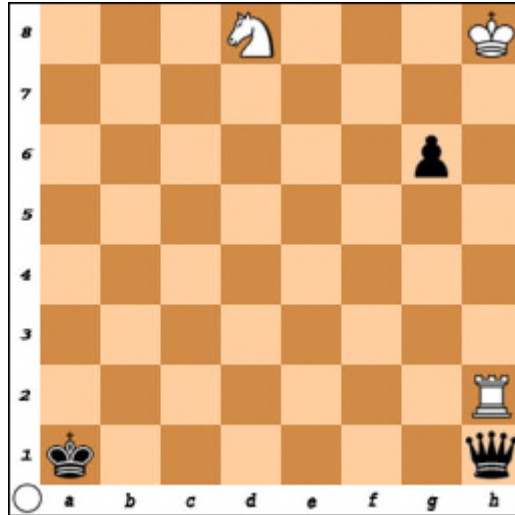
“The rich ruleth over the poor,
and the borrower is servant to the lender.”
– Proverbs 22:7

Solution:

1. a5
2. Qa7
3. Qxd4
4. Qb6
5. Ka6
6. Ra7**Rxb6#**

42

Series Helpmate in 12



The British Chess Magazine 2019

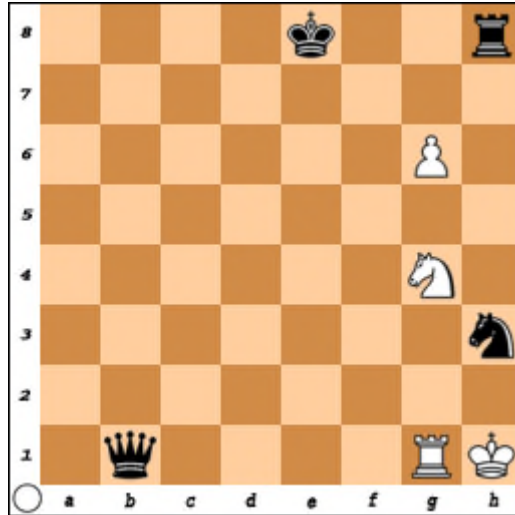
“The rich and poor meet together:
the LORD is the Maker of them all.”
– Proverbs 22:2

Solution:

- 1-6. K a1-g1
7. K xh2
- 8-11. K h2-h6
12. Q h5N f7#

43

Series Helpmate in 5



Tehtävänäiekka 2019

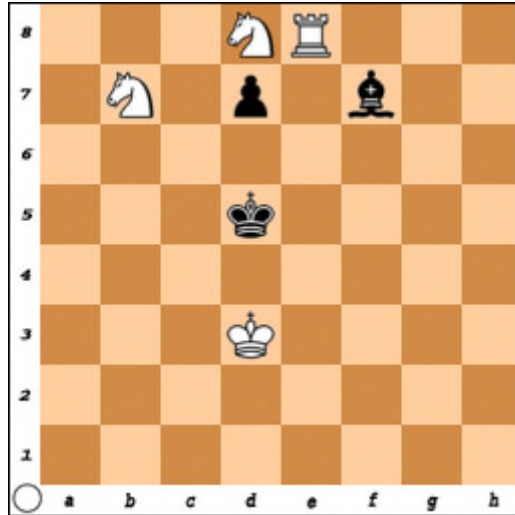
“Remove not the ancient landmark, which thy fathers have set.”
– Proverbs 22:28

Solution:

1. 0-0
2. Nf4
3. Nxc6
4. Nh8
5. Qh7+Nh6#

44

Series Helpmate in 8



“He that hath no rule over his own spirit is like a city
that is broken down, and without walls.”

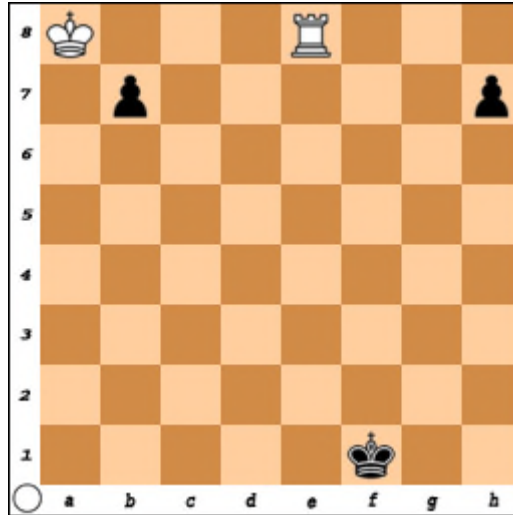
– Proverbs 25:28

Solution:

1. Bh5
2. Bd1
3. Ba4
4. Bc6
5. Bxb7
6. Kd6
7. Kc7
8. Kc8Ne6#

45

Series Helpmate in 14



Tehtävänäiekka 2019

“Hell and destruction are never full;
so the eyes of man are never satisfied.”

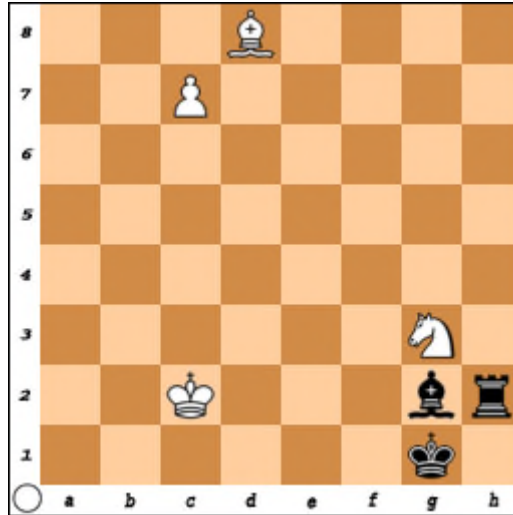
– Proverbs 27:20

Solution:

- 1-4. h7-h2
5. h1=R
6. Rh5
7. Re5
- 8-12. Kf1-a6
13. Ra5
14. b5**Re6#**

46

Series Helpmate in 6



“Though thou shouldst bray a fool in a mortar among wheat with a pestle,
yet will not his foolishness depart from him.”

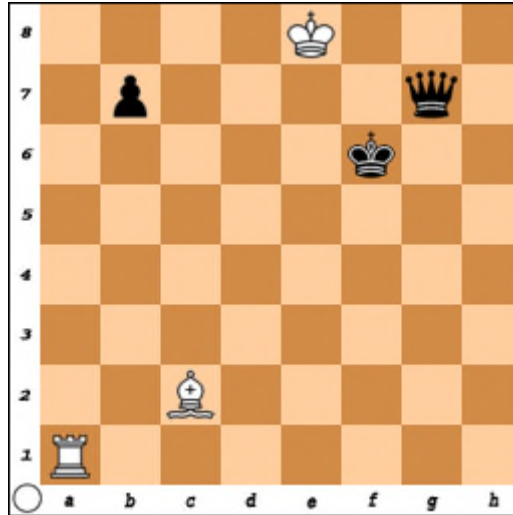
– Proverbs 27:22

Solution:

1. Rh7
2. Bc6
3. Rxc7
4. Rh7
5. Bg2
6. Rh2**Bb6#**

47

Series Helpmate in 10



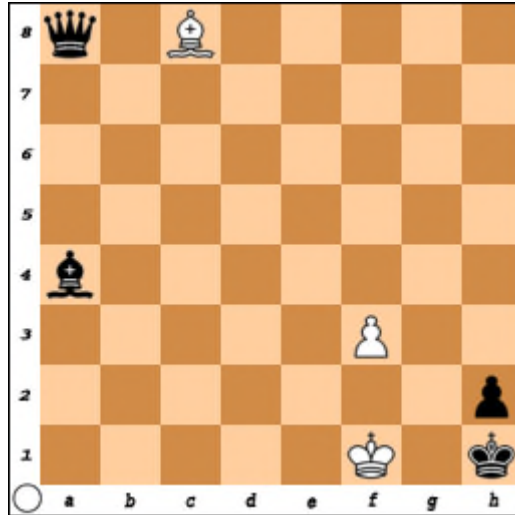
“He that giveth unto the poor shall not lack:
but he that hideth his eyes shall have many a curse.”
– Proverbs 28:27

Solution:

- 1-4. b7-b2
5. b1=R
6. Rh1
7. Qg1
8. Kg7
9. Kg8
10. Rh8**Rxg1#**

48

Series Helpmate in 5



“The fear of man bringeth a snare: but whoso putteth
his trust in the LORD shall be safe.”

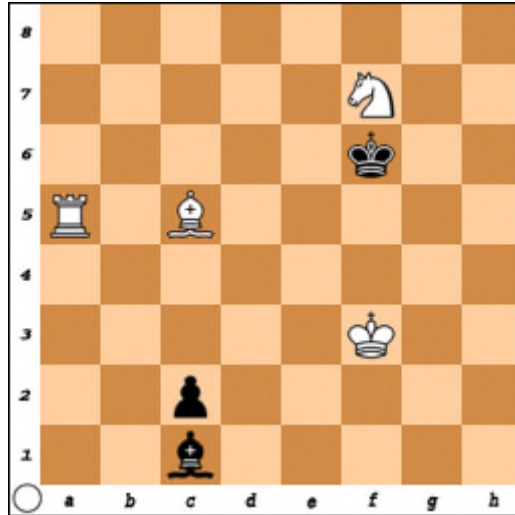
– Proverbs 29:25

Solution:

1. Bd1
2. Qa1
3. Qh8
4. Bxf3
5. Bb7**Bxb7#**

49

Series Helpmate in 6



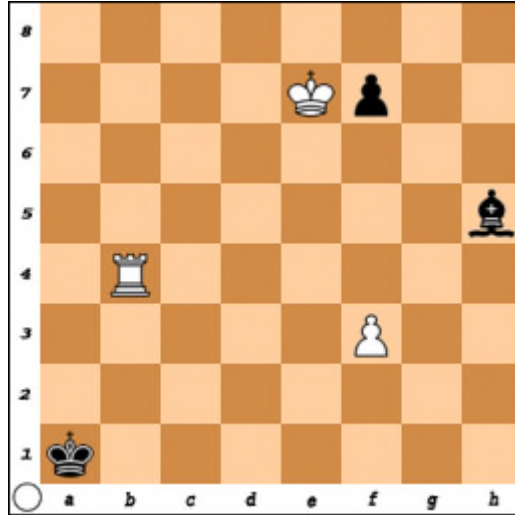
“Who hath ascended up into heaven, or descended?
who hath gathered the wind in his fists?
who hath bound the waters in a garment?
who hath established all the ends of the earth?
what is his name, and what is his son's name,
if thou canst tell?”
– Proverbs 30:4

Solution:

1. Bh6
2. c1=Q
3. Qc4
4. Qxf7
5. Qg6
6. Kg5**Be7#**

50

Series Helpmate in 9



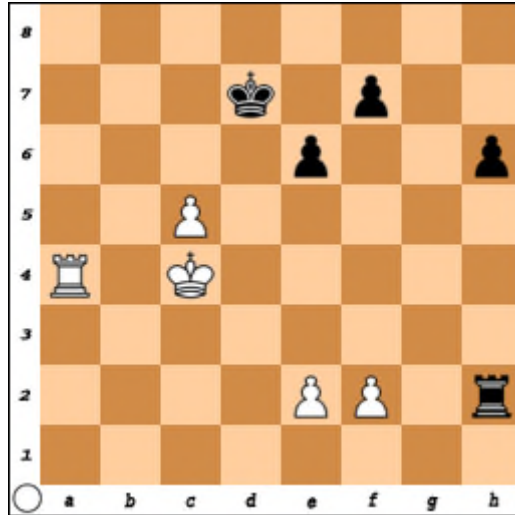
“The legs of the lame are not equal:
so is a parable in the mouth of fools.”
– Proverbs 26:7

Solution:

1. f5
2. Bf7
3. Bb3
4. Kb2
5. Kc3
6. Bc4
7. Kd4
8. Ke5
9. Bd5**f4#**

51

Series Helpmate in 8



“Hell and destruction are before the LORD: how much more
then the hearts of the children of men?”

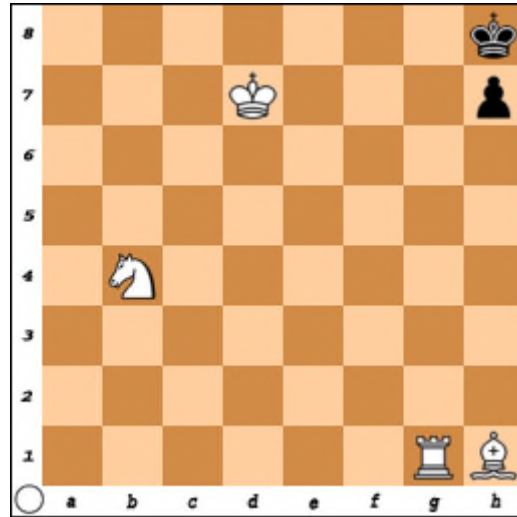
– Proverbs 15:11

Solution:

1. Rh5
2. Rd5
3. e5
- 4-6. Kd7-e4
7. f5
8. Rxc5+Kxc5#

52

Series Helpmate in 14



“Better it is to be of an humble spirit with the lowly,
than to divide the spoil with the proud.”

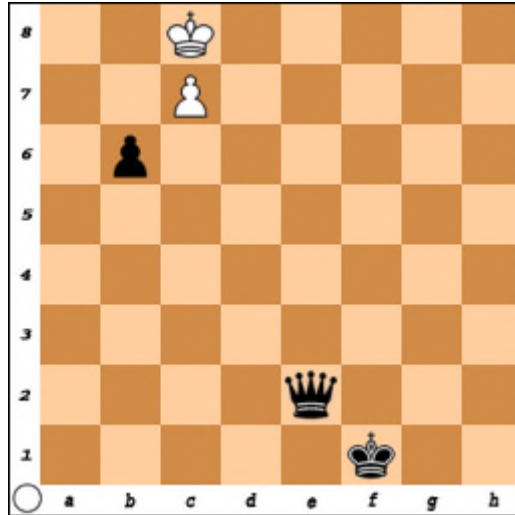
– Proverbs 16:19

Solution:

- 1-4. h7-h2
5. hxg=B
- 6-13. Kh8-b8
14. Ba7Na6#

53

Series Helpmate in 10



Irish Chess Union 2018

“A merry heart doeth good like a medicine:
but a broken spirit drieth the bones.”

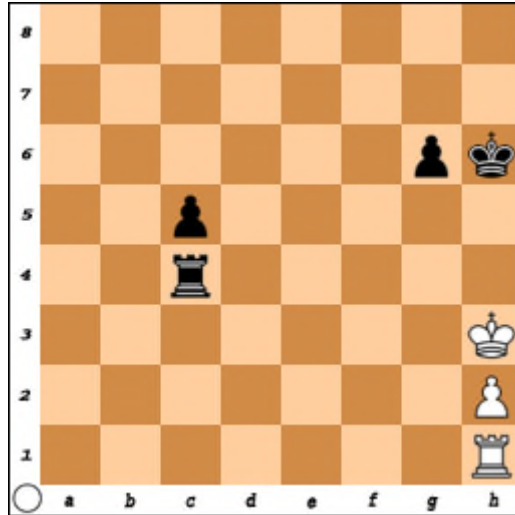
– Proverbs 17:22

Solution:

1. Qa2
- 2-8. Kf1-a8
9. Qa7
10. Qb8+bxc=Q#

54

Series Helpmate in 9



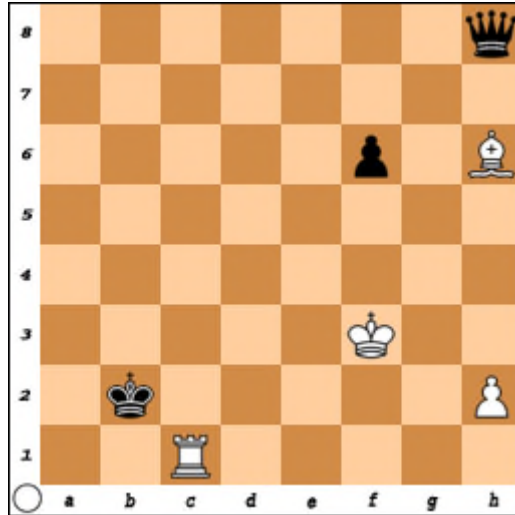
“He that answereth a matter before he heareth it,
it is folly and shame unto him.”

– Proverbs 18:13

Solution:

1. Rg4
- 2-4. c5-c2
5. c1=B
6. Bf4
7. Bxh2
8. Be5
9. Bg7**Kxg4#**

Series Helpmate in 10



StrateGems 2019

“The name of the LORD is a strong tower:
 the righteous runneth into it, and is safe.”

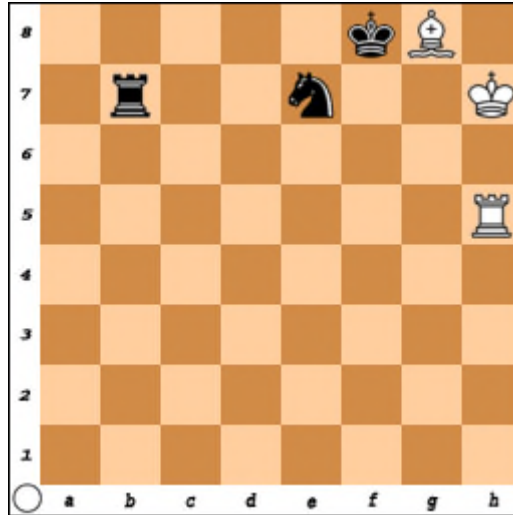
– Proverbs 18:10

Solution:

1. Qb8
2. Qxh2
3. Qc2
- 4-9. Kb2-h5
10. Qg6**Rh1#**

56

Series Helpmate in 8



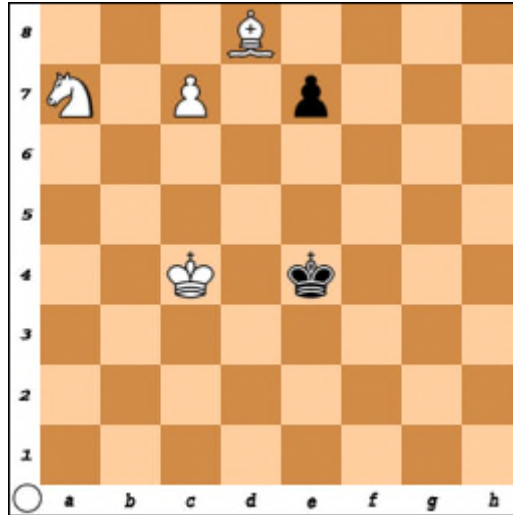
“Hear counsel, and receive instruction,
that thou mayest be wise in thy latter end.”
– Proverbs 19:20

Solution:

1. Rb2
2. Nd5
3. Ke7
4. Kd6
5. Kc5
6. Kb4
7. Ka3
8. Nb4**Ra5#**

57

Series Helpmate in 11



“...a just man falleth seven times, and riseth up again:
but the wicked shall fall into mischief.”

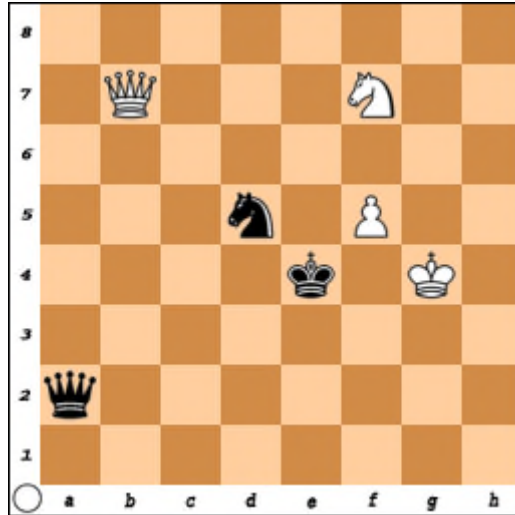
– Proverbs 24:16

Solution:

1. Ke5
2. Kd6
- 3-6. e7-e2
7. e1=B
8. Bf2
9. Bxa7
10. Kc6
11. Kb6c8=Q#

58

Series Helpmate in 5



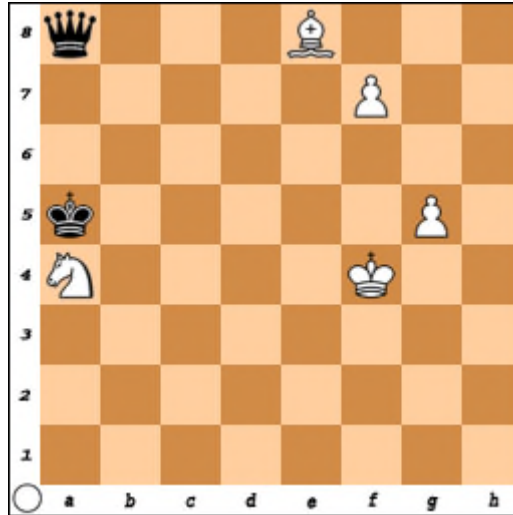
“It is as sport to a fool to do mischief:
but a man of understanding hath wisdom.”
– Proverbs 10:23

Solution:

1. Kd4
2. Ne7
3. Qxf7
4. Ke5
5. Kf6**Qb2#**

59

Series Helpmate in 10



“Be not afraid of sudden fear, neither of the desolation
of the wicked, when it cometh.”

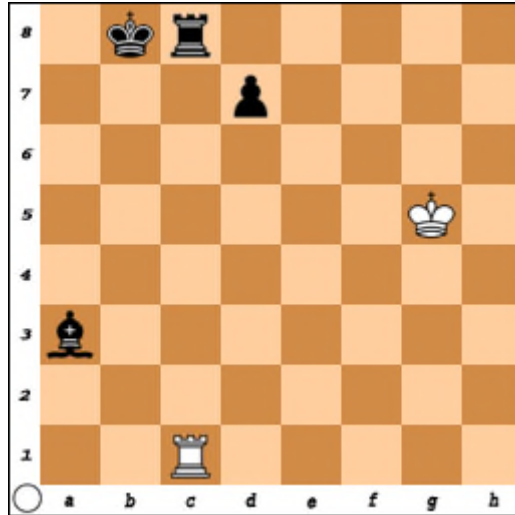
– Proverbs 3:25

Solution:

1. Kb4
2. Qxa4
3. Qa1
- 4-9. Kb4-g6
10. Qg7f8=N#

60

Series Helpmate in 8



“The curse of the LORD is in the house of the wicked:
but he blesseth the habitation of the just.”

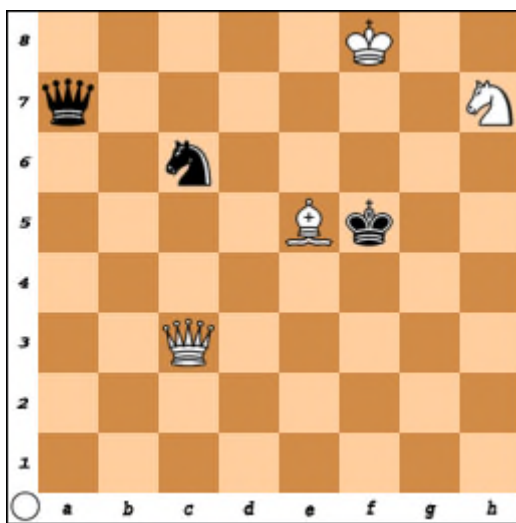
– Proverbs 3:33

Solution:

1. d5
2. Rc5
3. Kc7
4. Kd6
5. Ke5
6. d4
7. Rd5
8. Bd6**Re1#**

- 10 Endgame Studies -

A



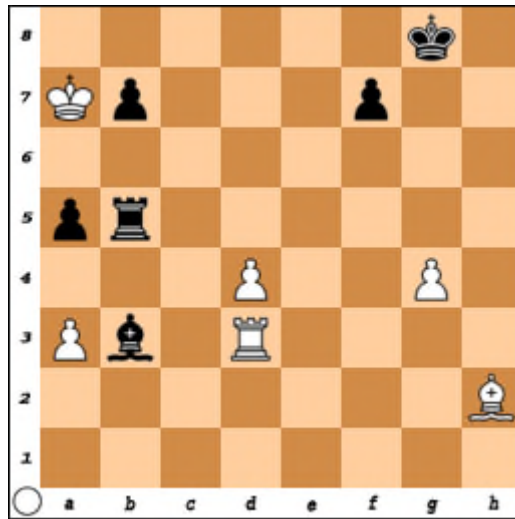
Schakend Nederland 1981

WIN

Solution:

- | | |
|----------|------|
| 1. Bc7 | Qxc7 |
| 2. Qh3+ | Ke4 |
| 3. Ng5+ | Kd5 |
| 4. Qb3+ | Kd6 |
| 5. Ne4+ | Kd7 |
| 6. Nc5+ | Kd6 |
| 7. Nb7+ | Kd7 |
| 8. Qh3 # | |

B



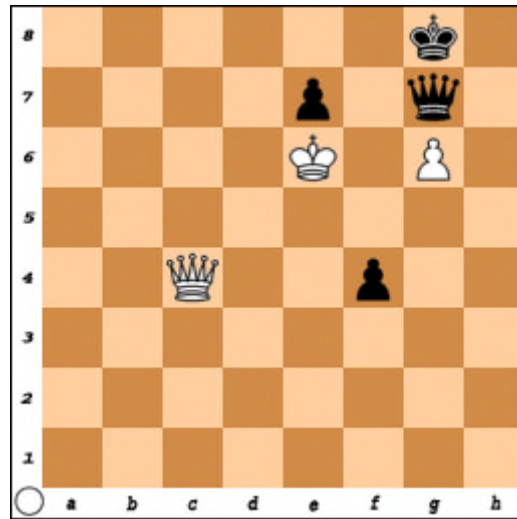
Tidskrift för Schack 1981

WIN

Solution:

- | | |
|---------|------|
| 1. d5 | Bxd5 |
| 2. a4 | Rc5 |
| 3. Bg1 | Rc1 |
| 4. Be3 | Re1 |
| 5. Bd2 | Re5 |
| 6. Bc3 | Rg5 |
| 7. Bf6 | Rxg4 |
| 8. Rxd5 | Rxa4 |
| 9. Rh5 | 1-0 |

C



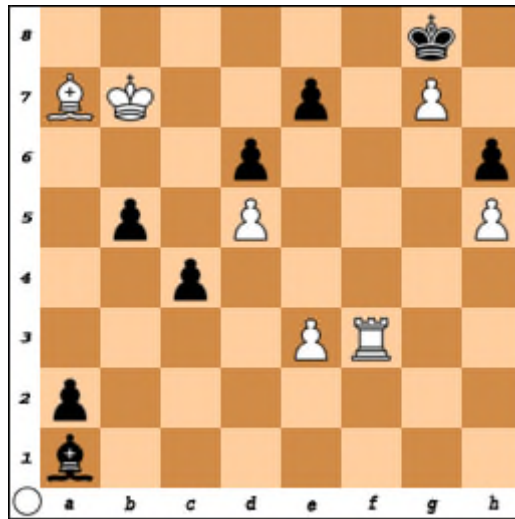
Suomen Shakki 1998

WIN

Solution:

1. Kf5+ Kh8
2. Qc8+ Qg8
3. Qc3+ Qg7
4. Qh3+ Kg8
5. Qb3+ Kh8
6. Qb8+ Qg8
7. Qb2+ Qg7
8. Qh2+ Kg8
9. Qa2+ Kh8
10. Qa8+ Qg8
11. Qh1+ Kg7
12. Kg5 Kf8
13. Qa8+ Kg7
14. Qa1+ Kf8
15. Kh6 Qd5
16. Qh8+ 1-0

D



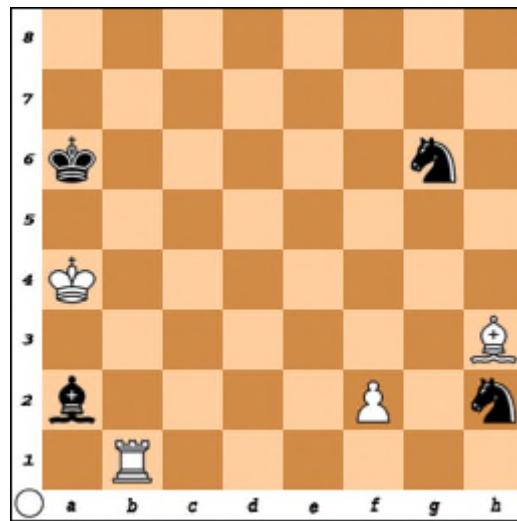
Schach 1994

WIN

Solution:

- | | |
|---------|------|
| 1. Rf8+ | Kxg7 |
| 2. Rf2 | Bb2 |
| 3. Rxb2 | a1=Q |
| 4. Bd4+ | Kh7 |
| 5. Rg2 | Qa5 |
| 6. Rg7+ | Kh8 |
| 7. Rg1+ | Kh7 |
| 8. Ra1 | Qd8 |
| 9. Ra8 | Qd7+ |
| 10. Kb6 | 1-0 |

E



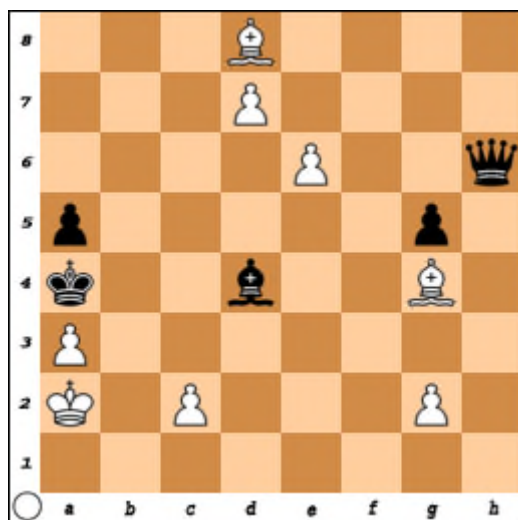
Schakend Nederland 1991

WIN

Solution:

1. Bc8+ Ka7
2. Rb7+ Ka8
3. Rh7 Nf1
4. Bb7+ Kb8
5. Ba6 Nd2
6. Rb7+ Ka8
7. Rb2 Bc4
8. Rxd2 Bxa6
9. Rd6 1-0

F



Robert Brieger Memorial Tourney 2014

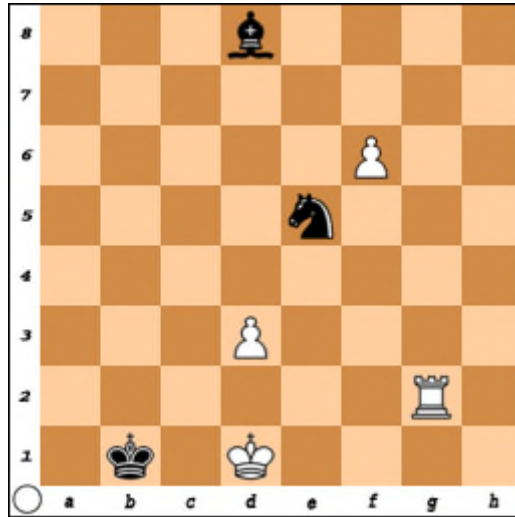
WIN

Solution:

- | | |
|---------|----------|
| 1. Bb6 | Bxb6 (i) |
| 2. d8=Q | Bxd8 |
| 3. e7 | Qc6 |
| 4. e8=Q | Qxe8 |
| 5. c4 | 1-0 |

(i) 1...Qf8 2. Bxd4 Qxa3+ 3. Kb1 Qb4+ 4. Bb2 Qe7 5. Ka2 etc 1-0

G



Schach Echo 1989

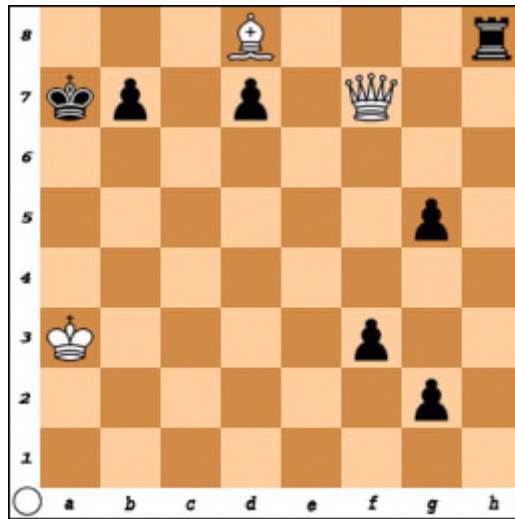
WIN

Solution:

- | | |
|---------|---------|
| 1. f7 | Nxf7 |
| 2. Rg8 | Bh4 (i) |
| 3. Rb8+ | Ka2 |
| 4. Kc2 | Ka3 |
| 5. Ra8+ | Kb4 |
| 6. Rf8 | N~ |
| 7. Rf4+ | 1-0 |

(i) 2..Bg5 3. Rg7 Ne5 4. Rxc5 Nxd3 5. Kd2 1-0

H

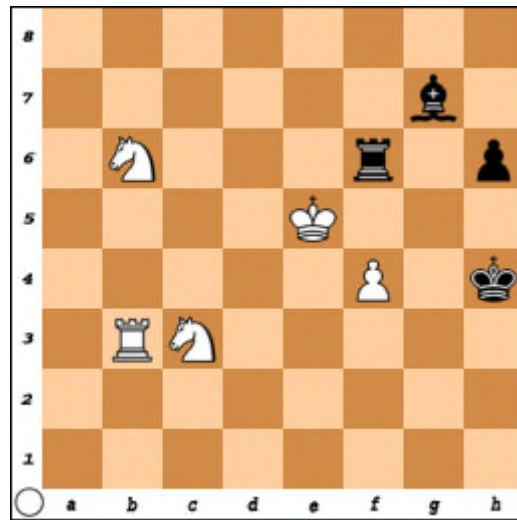


WIN

Solution:

- | | |
|----------|------|
| 1. Qd5 | g1=Q |
| 2. Qa5+ | Kb8 |
| 3. Bc7+ | Kc8 |
| 4. Qc3 | Qh1 |
| 5. Bh2+ | Kd8 |
| 6. Qxh8+ | Ke7 |
| 7. Bd6+ | 1-0 |

I



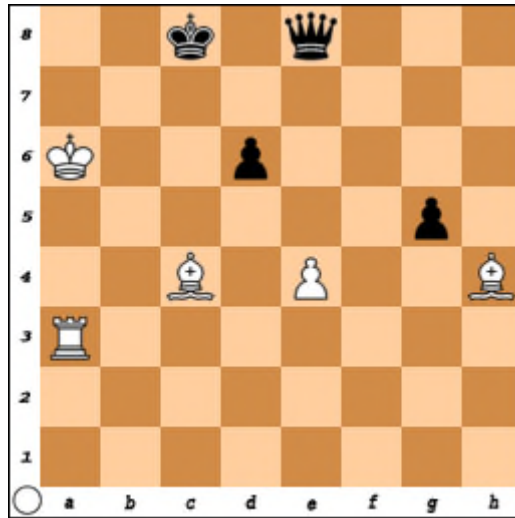
WIN

Solution:

1. Ke4 Re6+
2. Kf3 Bxc3
3. Nd5 Bh8
4. Rb8 Bf6 (i)
5. Rb1 Kh5
6. Rb5 Kg6
7. f5+ Kxf5
8. Ne7#

- (i) A. 4...Bg7 5.Rg8 Rg6 6.Ne7 Rg3+ 7.Ke4 1-0
- B. 4...Be5 5.Rb1 Kh5 6.Re1 Kg6 7.Re4 Kf5 8.Ne3+ 1-0
- C. 4...Bd4 5.Rb4 Bc5 6.Rb1 Kh5 7.Rb5 Rc6 8.Nb4 1-0

J



The Problemist 2021

DRAW

1. Kb6 Qd8+
2. Kb5 Qd7+
3. Kb4 Qb7+
4. Kc3 Qg7+
5. Kd3 gxh
6. Ra8+ Kb7
7. Bd5+ Kb6
8. Rb8+ Kc5
9. Rc8+ Kb4
10. Rb8+ Ka3
11. Ra8+ Kb2
12. Rb8+ Kc1
13. Rc8+ Kd1
14. Rg8 Qa7
15. Ra8 Qg7
16. Rg8 =

Cover: Original artwork by the author.

Copyright 2023